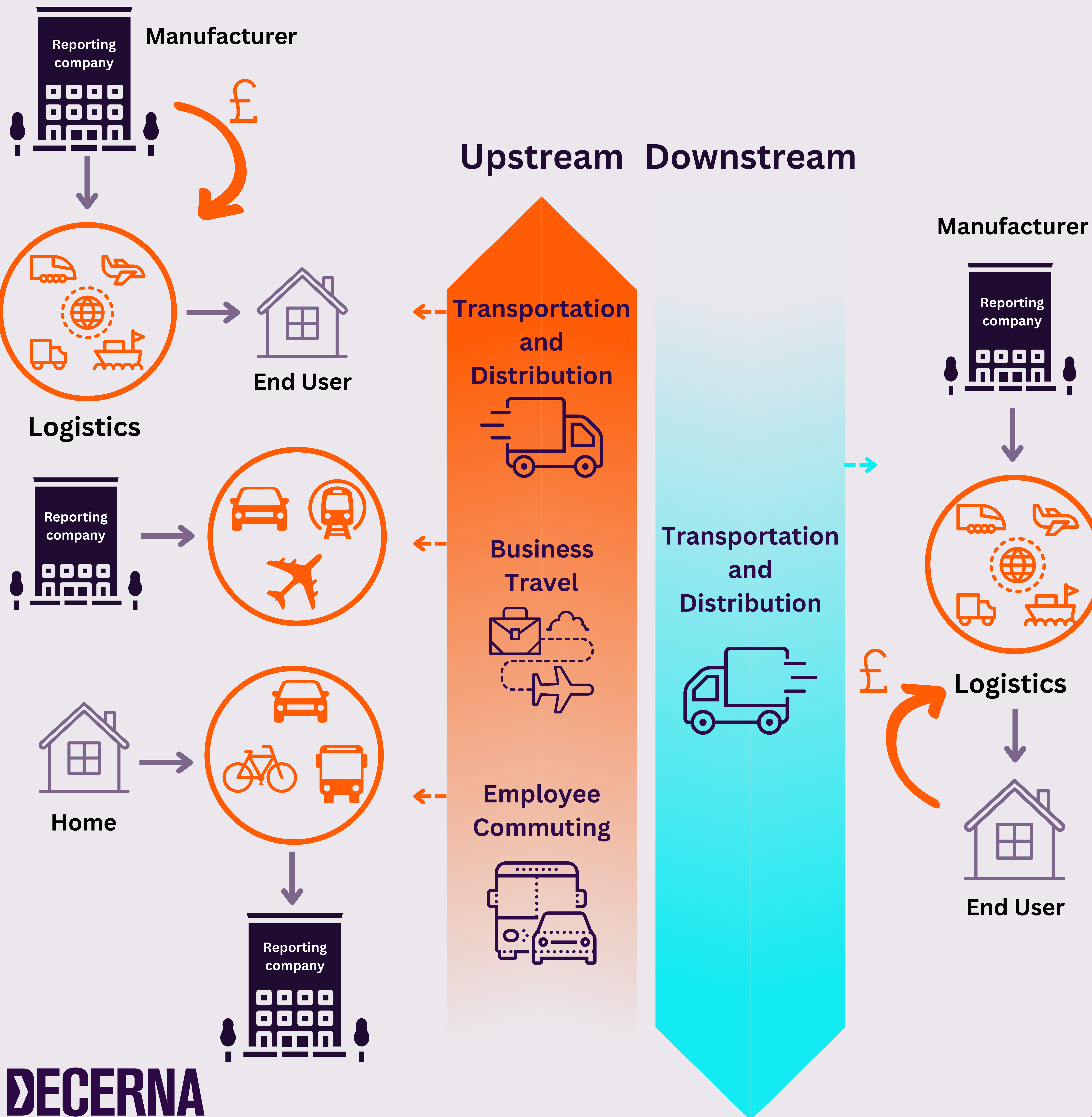


# Category 4, 6, 7 & 9

Categories 4, 6, 7, and 9 cover **transportation** aspects from **upstream logistics** to **employee commute** and **downstream distribution**. Efficient management of these categories is vital for reducing environmental impact and optimising resource usage across the supply chain.



## Emission Reduction Strategies



### Sustainable Transportation Modes

- Transition to **low or zero-emission vehicles**, such as **electric vehicles (EVs)**, for transportation and distribution fleets.
- Choose sustainable travel options, such as **public transportation**, **video conferencing**, or **virtual meetings**, whenever possible.
- Reduce transportation distances by **optimising routes** and shipment sizes for both upstream and downstream logistics.
- Collaborate with logistics partners, industry associations, and government initiatives to **drive collective action** and **streamline sustainable transportation practices**.

### Measurement and Collaboration



- **Plan ahead** to combine multiple meetings and **reduce the number of trips** required.
- When air travel is unavoidable, **fly economy class** and choose **direct flights** to minimise emissions.
- Engage with local authorities and transportation agencies to advocate for **infrastructure improvements** and policies that support **sustainable transportation modes**.
- Collaborate with transportation and logistics providers to **accurately measure and disclose emissions** associated with transportation and distribution activities.